



STUDIO 1

Operation Department.  
Camera and Lighting Section

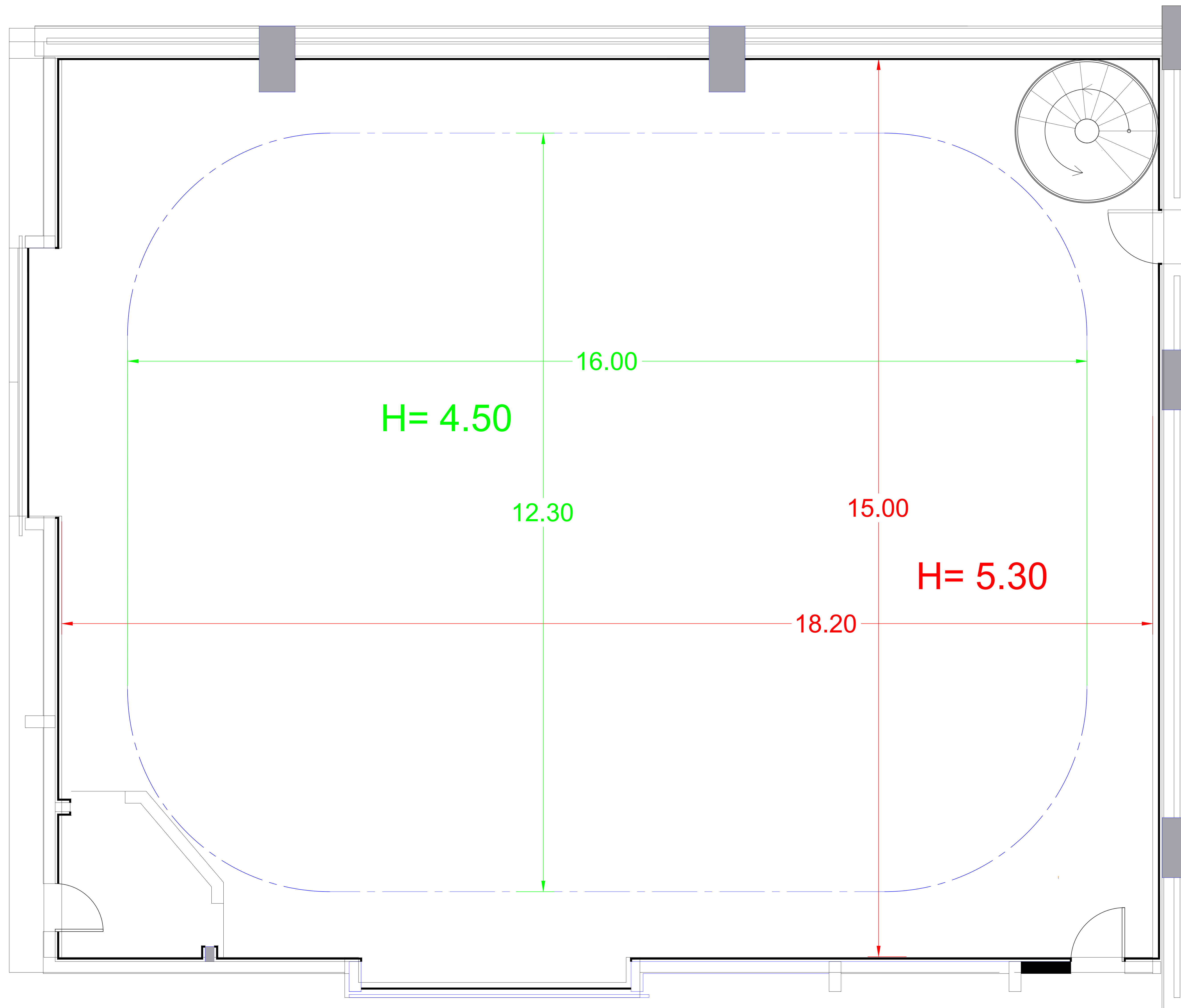
Studio Dimensions

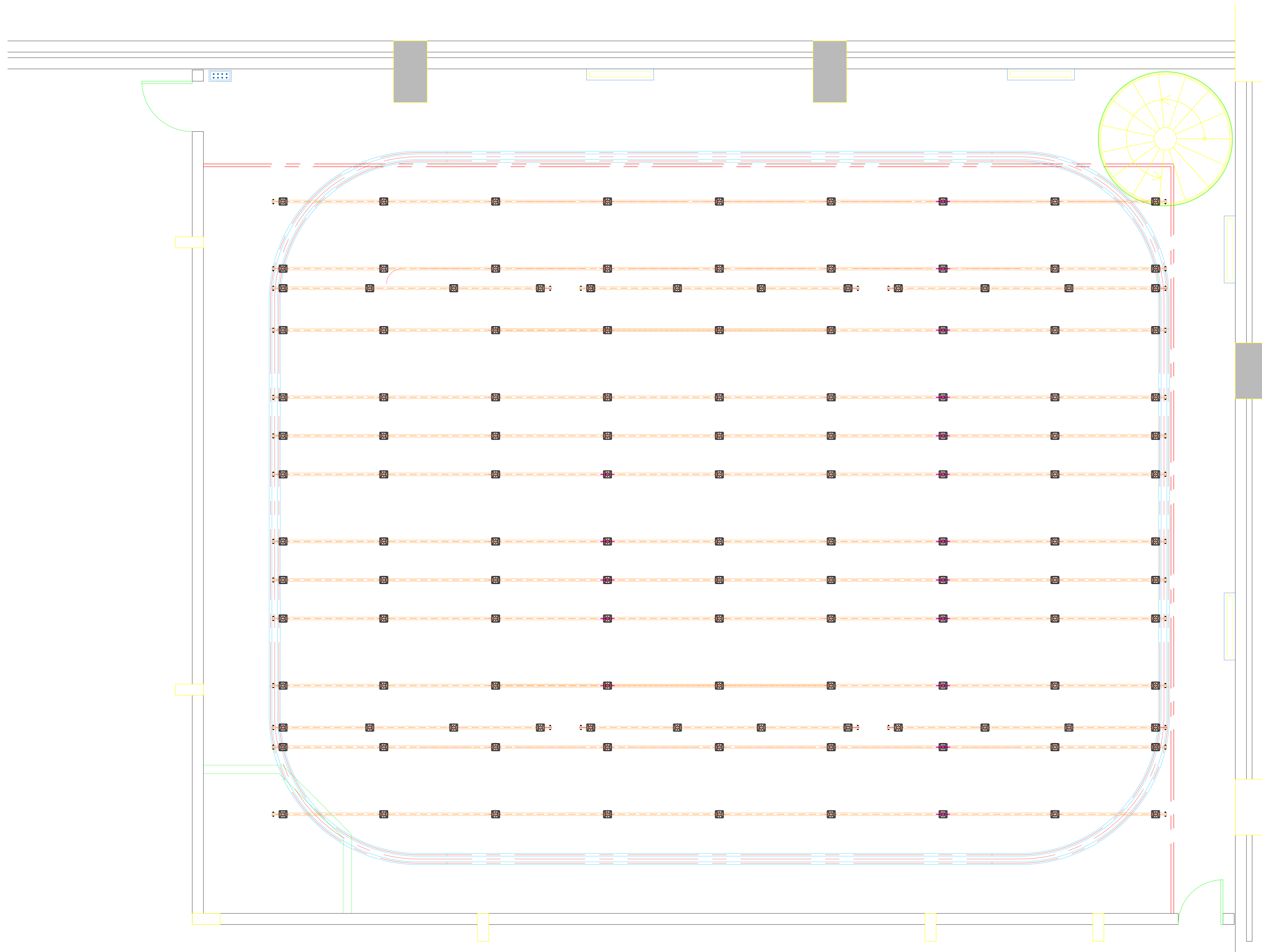
structural Dimensions:  
(L:18.2m, W:15 m, H:5.3m)

Effective Dimensions:  
(L:16m, W:12.3m, H:4.5m)

Drawn By: Hesham Alyaseen.

Date: 15/09/2023



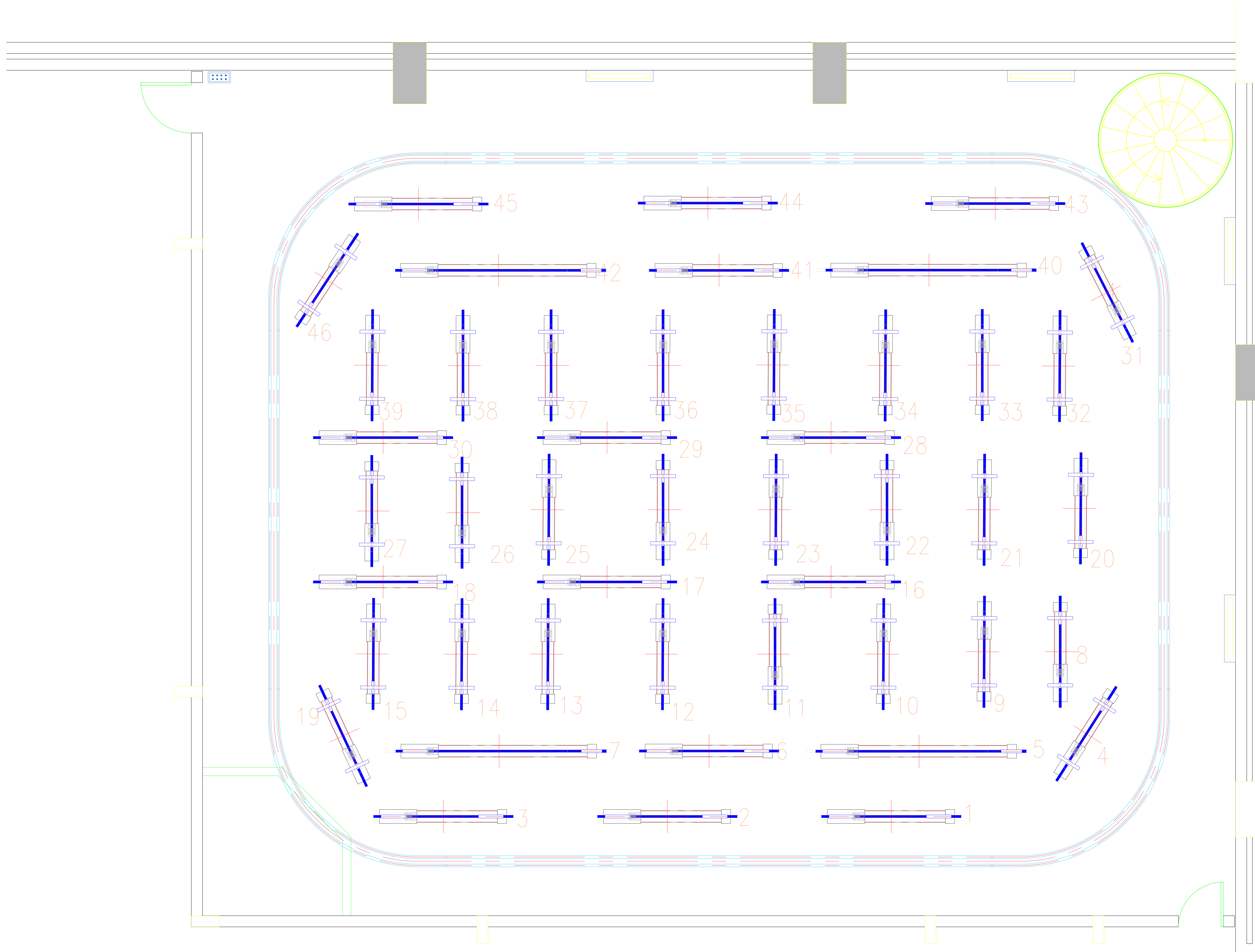


شبكة أبوظبي للإعلام  
 ABU DHABI MEDIA NETWORK

**LIVE**  
 PRODUCTIONS

|  |
|--|
| STUDIO 1   |
| Operation Department.<br>Camera and Lighting Section |
| Hoists carriers layout                               |
| Drawn By: Hesham Alyaseen.                           |
| Date: 15/09/2023                                     |

|  |
|--|
| STUDIO 1   |
| Operation Department.<br>Camera and Lighting Section |
| Actual Hoists layout and numbering                   |
| Hoist Brand :De Sisti / Italy                        |
| number of hoists: 46                                 |
| number of scenery cranes: 6                          |
| Drawn By: Hesham Alyaseen.                           |
| Date: 15/09/2023                                     |







|  |
|--|
| STUDIO 1   |
| Operation Department.<br>Camera and Lighting Section   |
| Power and DMX Layout   |
| Number of hoists 46<br>Number of channels on hoists 138<br>Number of Direct Plugs on Hoists 34                 |
| Number of Panels on the Floor Level (FL) :8<br>Number of channels on FL :16<br>Number of Direct plugs at FL :8 |
| Number of DMX ports on Hoists 34<br>Number of DMX ports on FL 8  |
| Drawn By: Hesham Alyaseen.   |
| Date: 21/12/2023   |

Power panel on the Floor Level

Hoists : 5,6,7,8,15,20,27,32,39, 40,41,42  
have No DMX neither Direct Power

