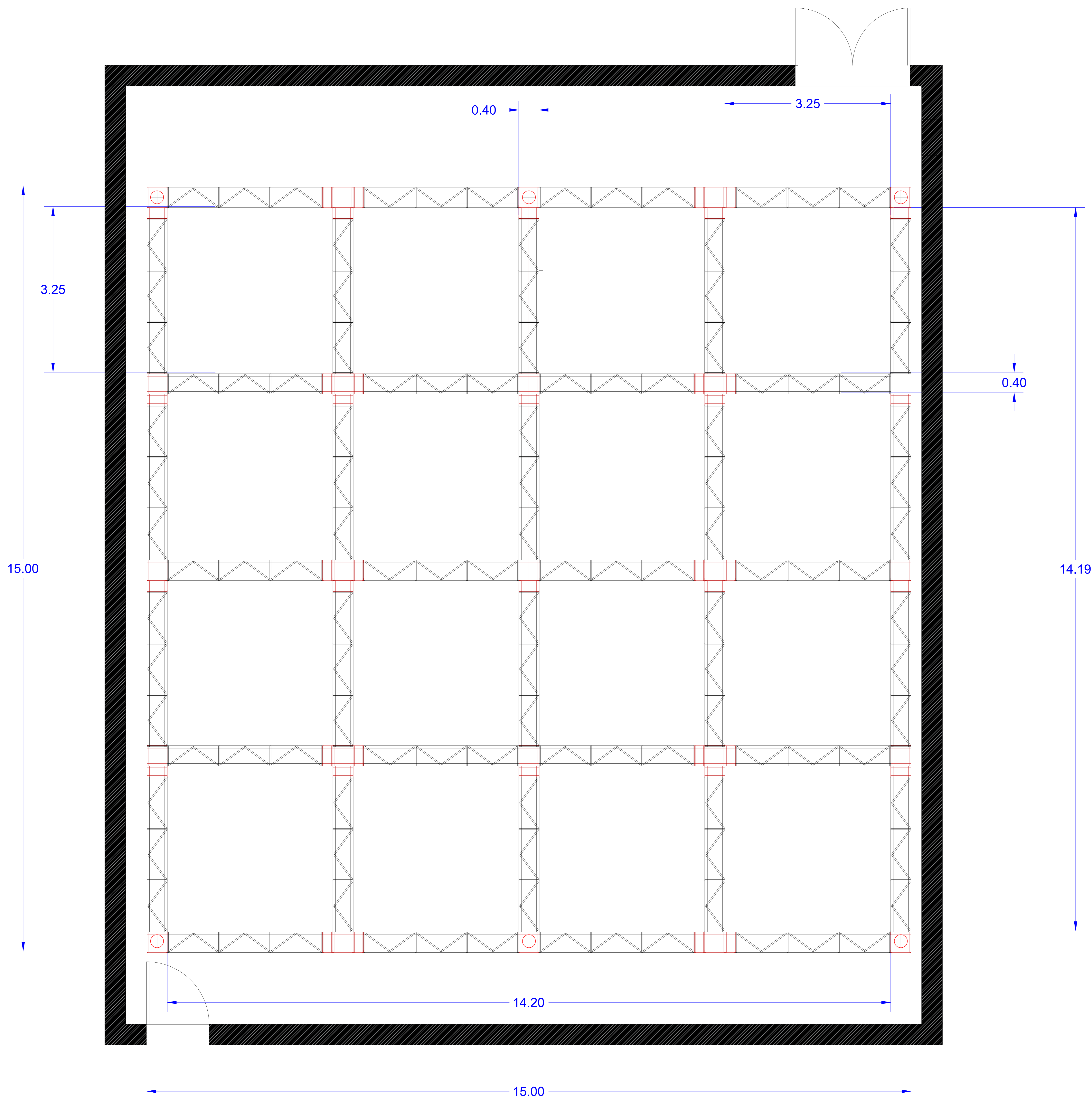


شبكة أبوظبي للإعلام  
 ABU DHABI MEDIA NETWORK

**LIVE**  
 PRODUCTIONS

STUDIO B
Operation Department. Camera and Lighting Section
Studio Dimensions
structural Dimensions: (L:17.9m, W:15.25m, H:6m)
Effective Dimensions: (L:14.9m, W:12.25m, H:4m)
Drawn By: Hesham Alyaseen.
Date:23/12/2023



شبكة أبوظبي للإعلام  
 ABU DHABI MEDIA NETWORK

**LIVE**  
 PRODUCTIONS

STUDIO B
Operation Department. Camera and Lighting Section
Main Trusses Layout
Truss dimensions : (0.4*3.25)m
Drawn By: Hesham Alyaseen.
Date:23/12/2023

14.19

14.20

15.00

15.00

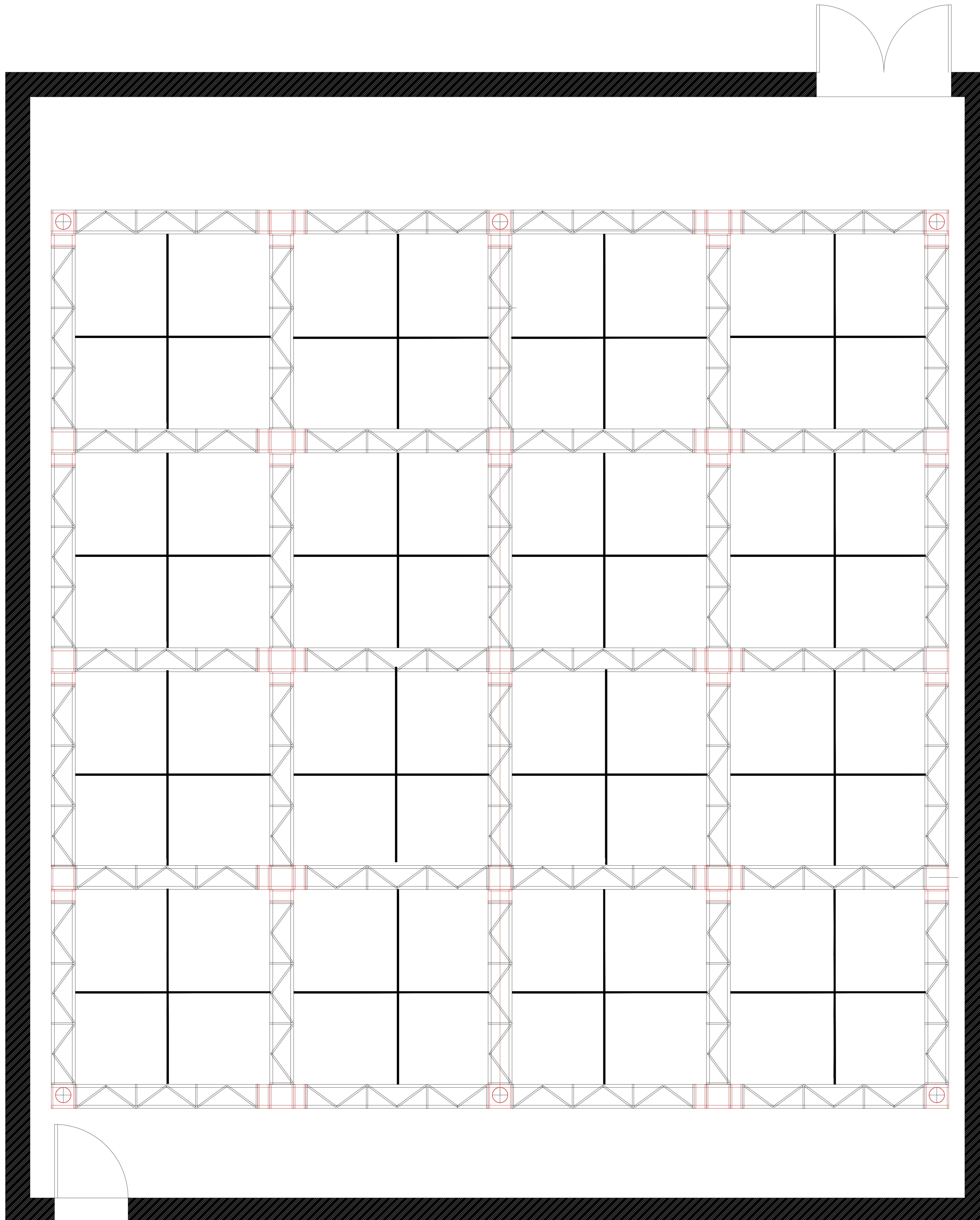
3.25

0.40

3.25

0.40



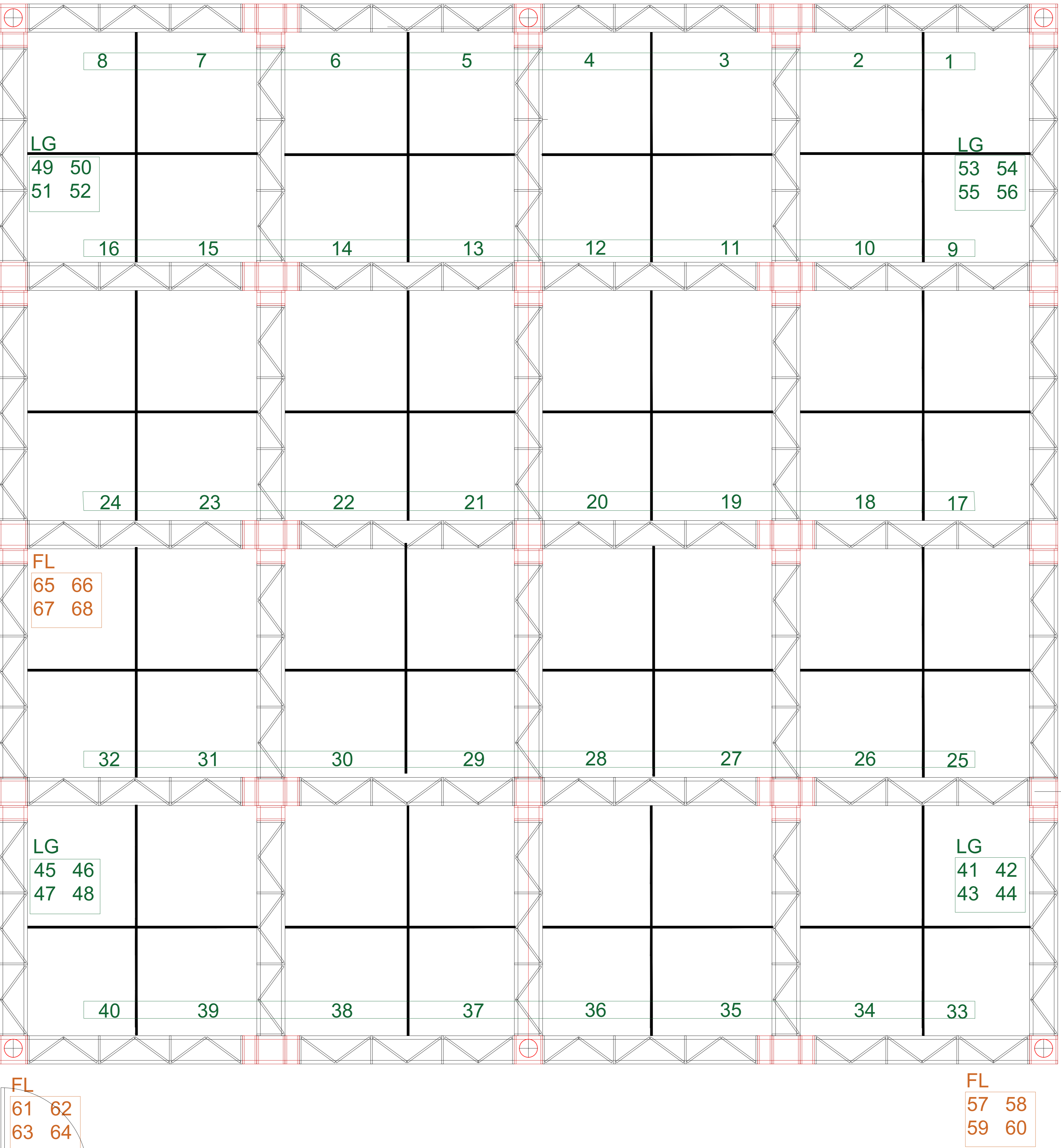
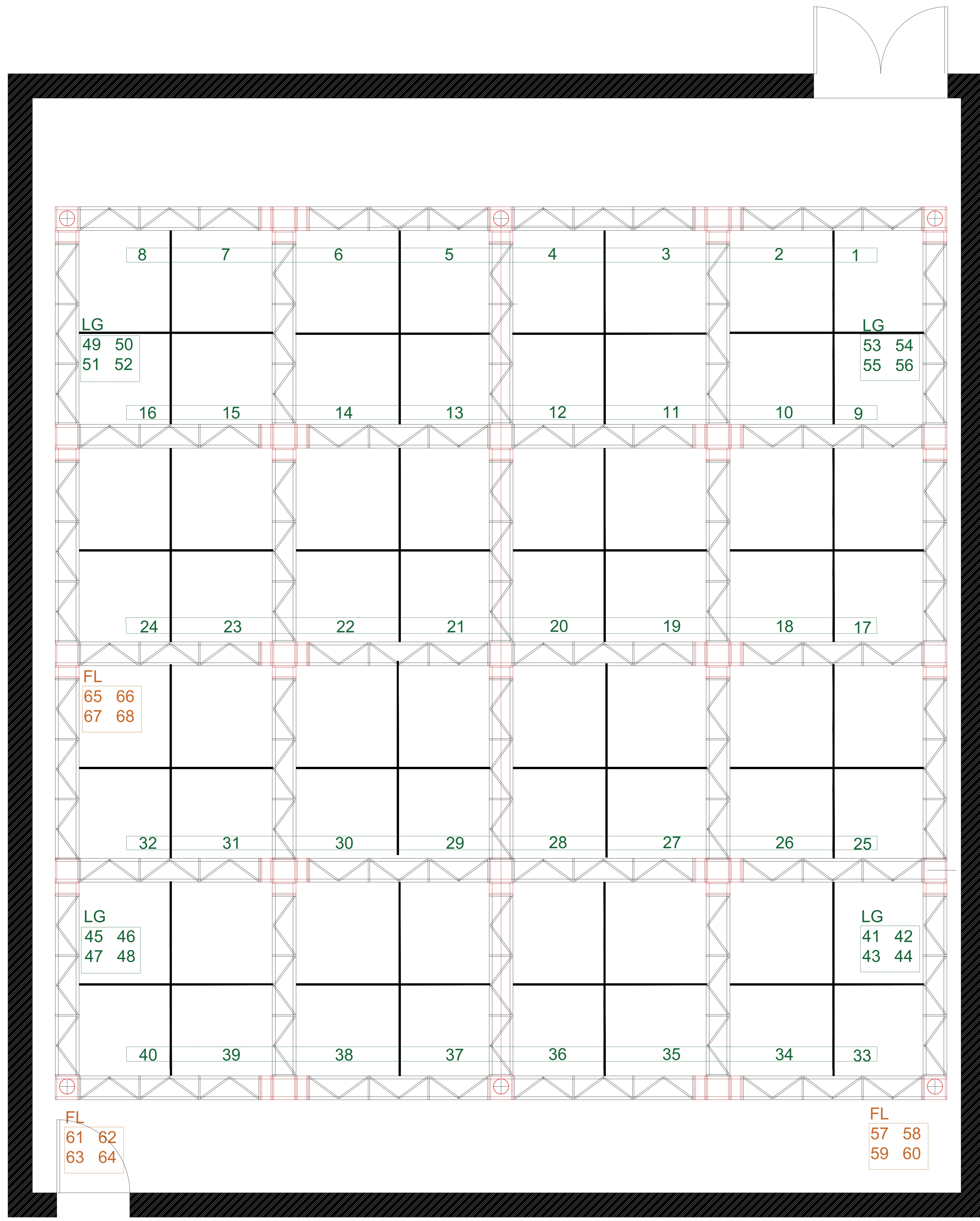


شبكة أبوظبي للإعلام  
ABU DHABI MEDIA NETWORK

**LIVE**  
PRODUCTIONS

STUDIO B
Operation Department. Camera and Lighting Section
Lighting Grid Layout
Truss dimensions : (0.4*3.25)
Drawn By: Hesham Alyaseen.
Date:23/12/2023

STUDIO B
Operation Department. Camera and Lighting Section
Power Layout
Number of channels in dimmer Room 72 Number of channels on Lighting grid 56 Number of Channels on Floor Level 12
Drawn By: Hesham Alyaseen.
Date:26/12/2023



LG  
 49 50  
 51 52

LG  
 53 54  
 55 56

FL  
 65 66  
 67 68

LG  
 45 46  
 47 48

LG  
 41 42  
 43 44

FL  
 61 62  
 63 64

FL  
 57 58  
 59 60