

STUDIO 5

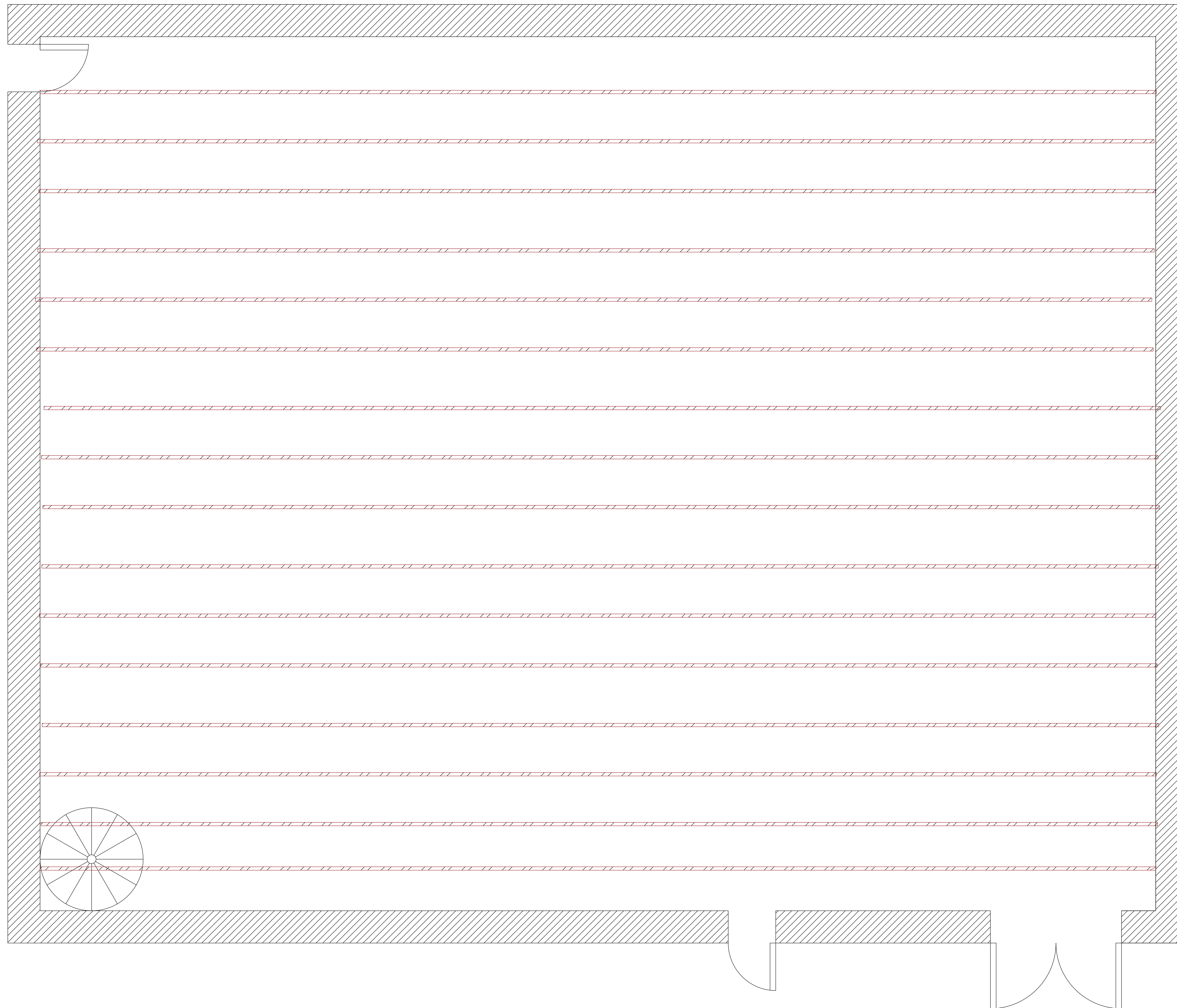
Operation Department.
Camera and Lighting Section

I Beams Layout

Number of I beams - 16

Drawn By: Hesham Alyaseen.

Date: 06/12/2023



STUDIO 5

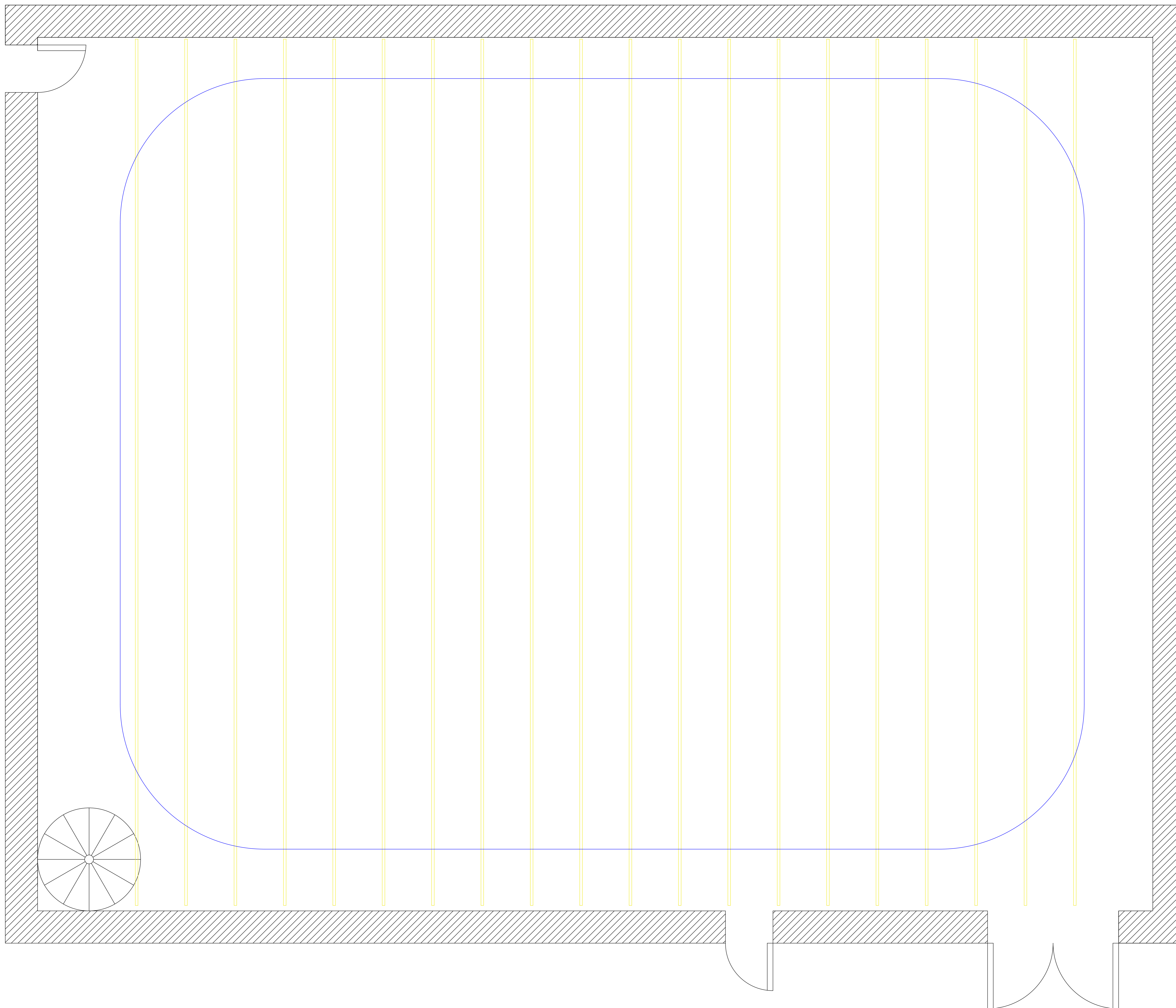
Operation Department.
Camera and Lighting Section

Hoists power Trays

Number of Trays: 20

Drawn By: Hesham Alyaseen.

Date: 06/12/2023



STUDIO 5

Operation Department.
Camera and Lighting Section

Hoist Layout

Hoist Brand :Tele-Stage Associates TSA /
England

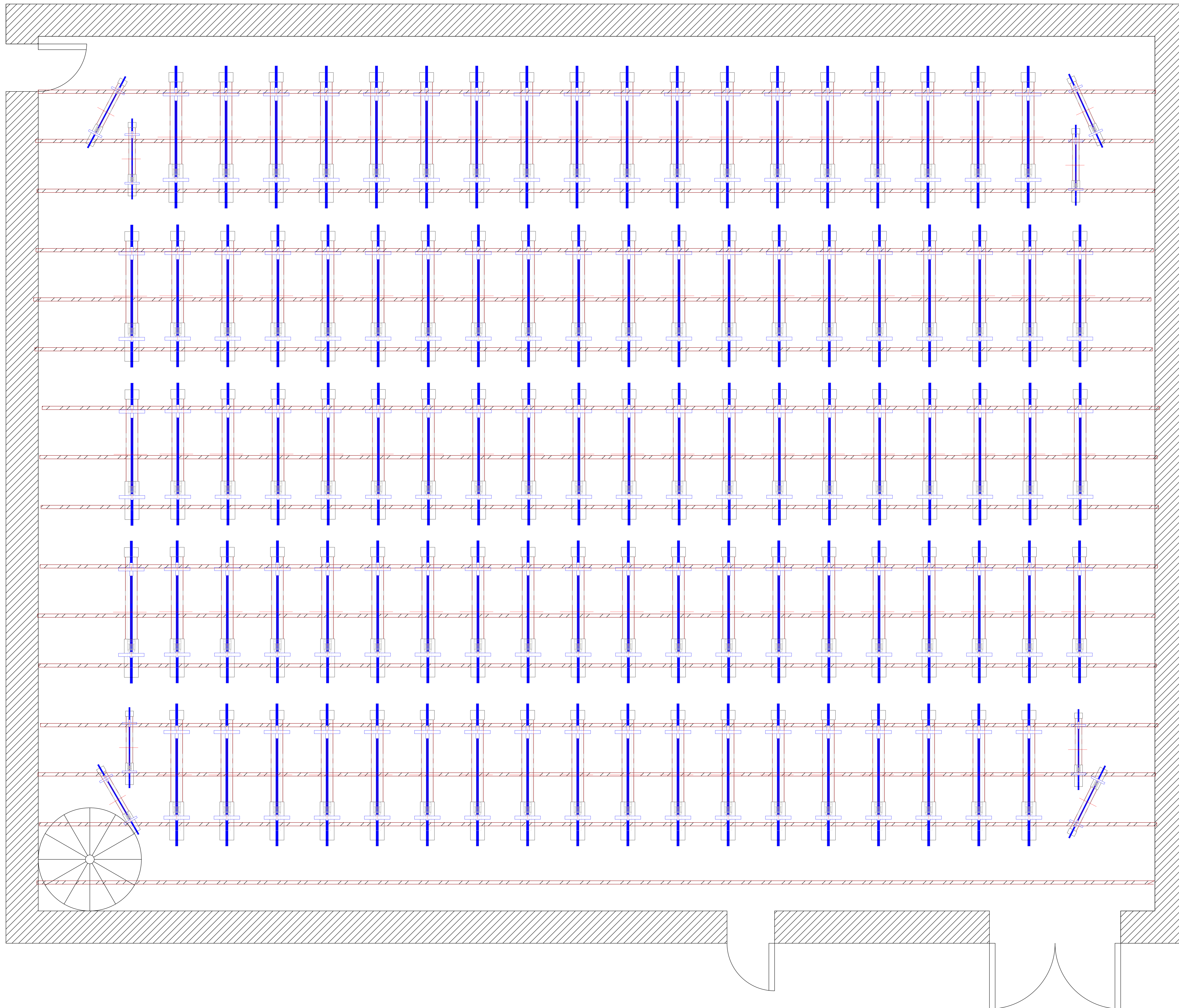
Number of Hoists: 104

Maximum Working Load: 120 Kg

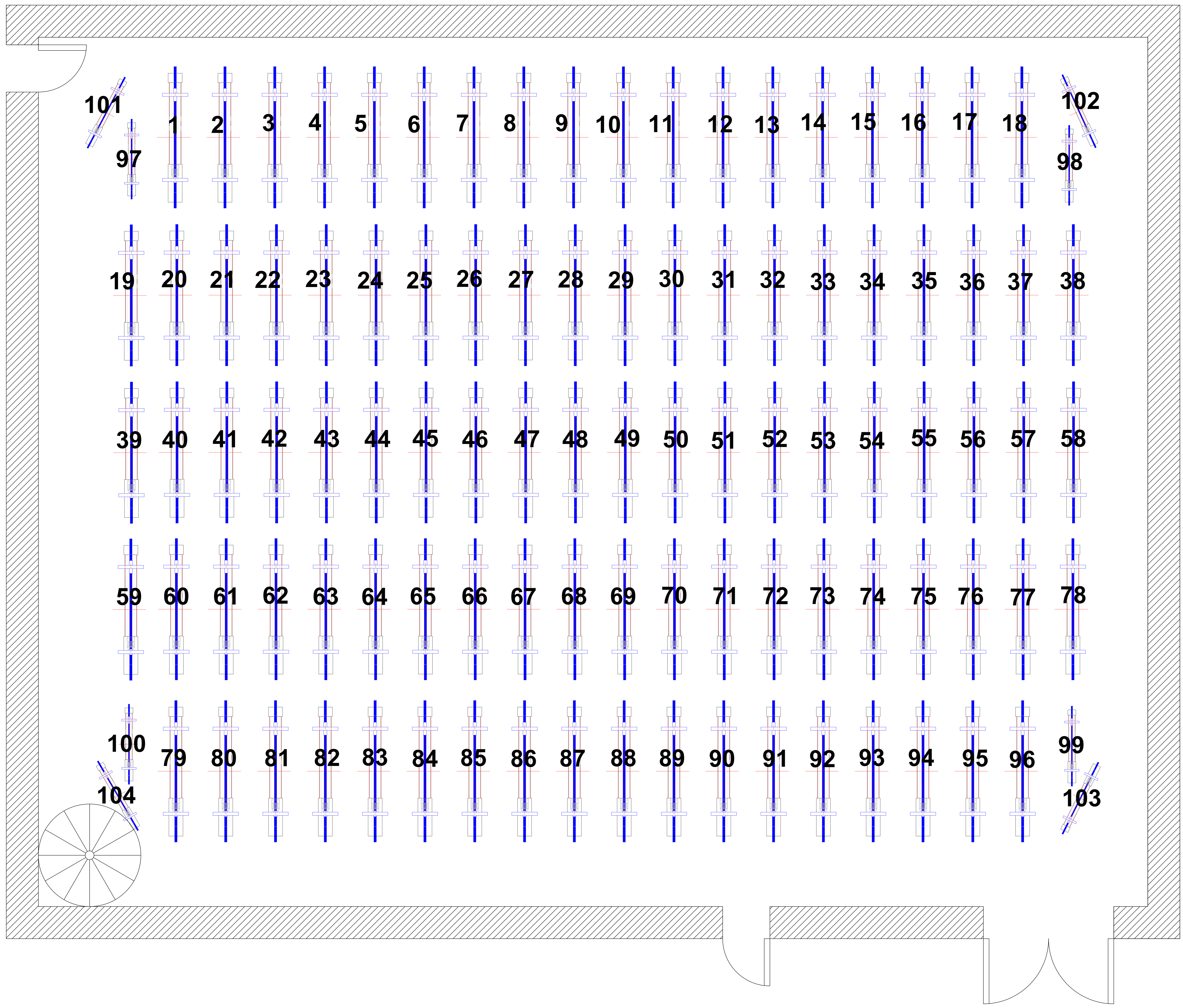
Maximum Tested Load: 175 Kg

Drawn By: Hesham Alyaseen.

Date: 06/12/2023



STUDIO 5
Operation Department, Camera and Lighting Section
Hoist Numbering
Hoist Brand :Tele-Stage Associates TSA / England
Number of Hoists: 104
Hoist Capacity: 120 Kg
Maximum Tested Load: 175 Kg
Drawn By: Hesham Alyaseen.
Date: 06/12/2023



STUDIO 5
Operation Department, Camera and Lighting Section
Power and DMX Layout
Ground Floor level Panels
Ceiling Level Panels
TP: Three Phase
DMX PORT
Drawn By: Eng. Hesham Alyaseen.
Date: 06/12/2023

