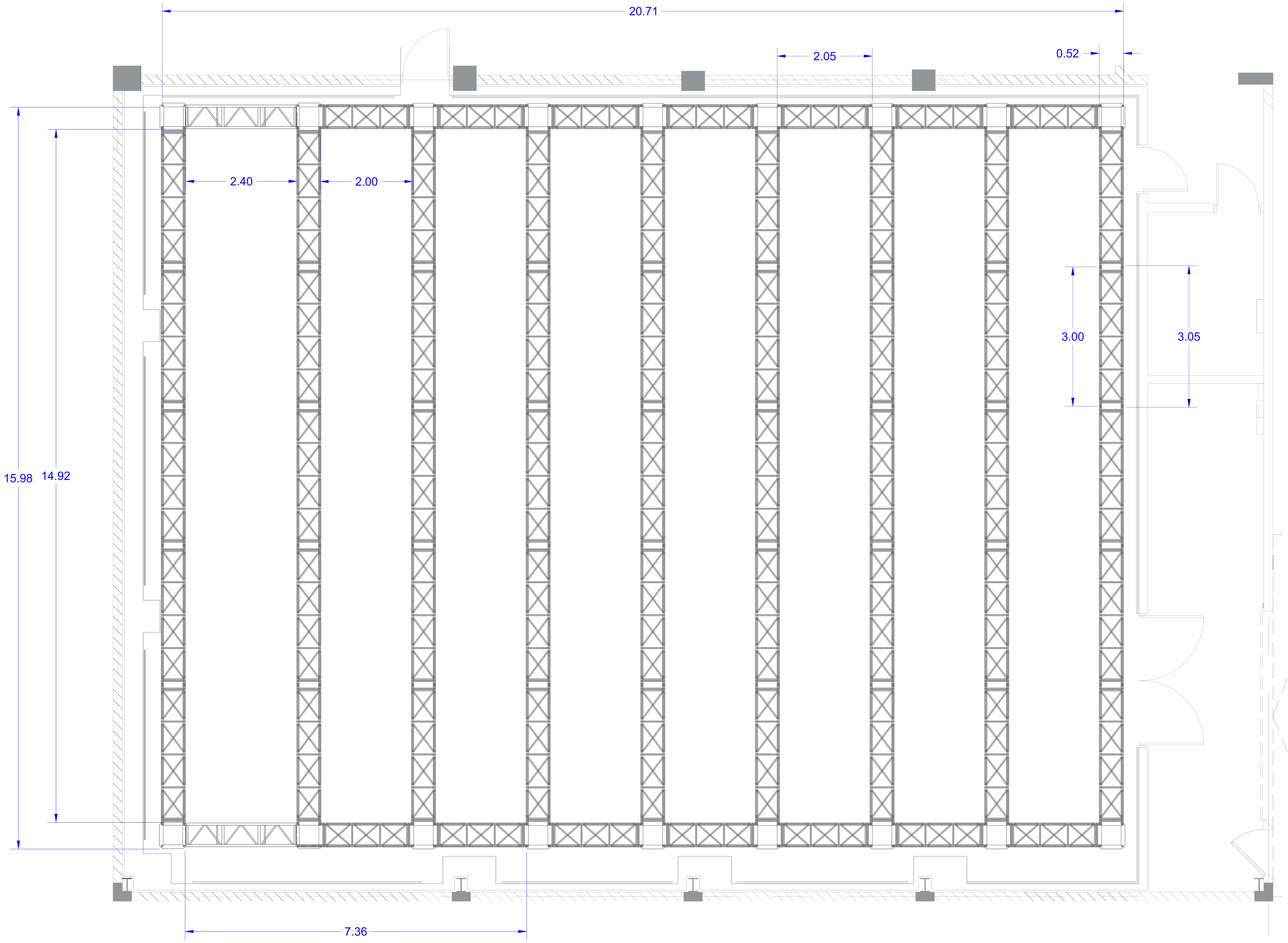


شبكة أبوظبي للإعلام  
ABU DHABI MEDIA NETWORK

LIVE  
PRODUCTIONS

Studio 4
Operation Department. Camera and Lighting Section
Studio Dimensions
Structural Dimensions: (L:28.1m, W:23m, H:10m)
Effective Dimensions: (L: 25.1m, W: 20m, H 6.5m)
Drawn by: Hesham Alyaseen
Date: 09/09/2023



شبكة أبوظبي للإعلام  
 ABU DHABI MEDIA NETWORK



Studio 4
Operation Department. Camera and Lighting Section
Trusses Layout
Truss Brand LITIC
Truss dimensions: (305/300) *52mm (205 /200)*52 mm
Drawn by: Hesham Alyaseen
Date: 15/11/2023

15.98

14.92

2.40

2.00

20.71

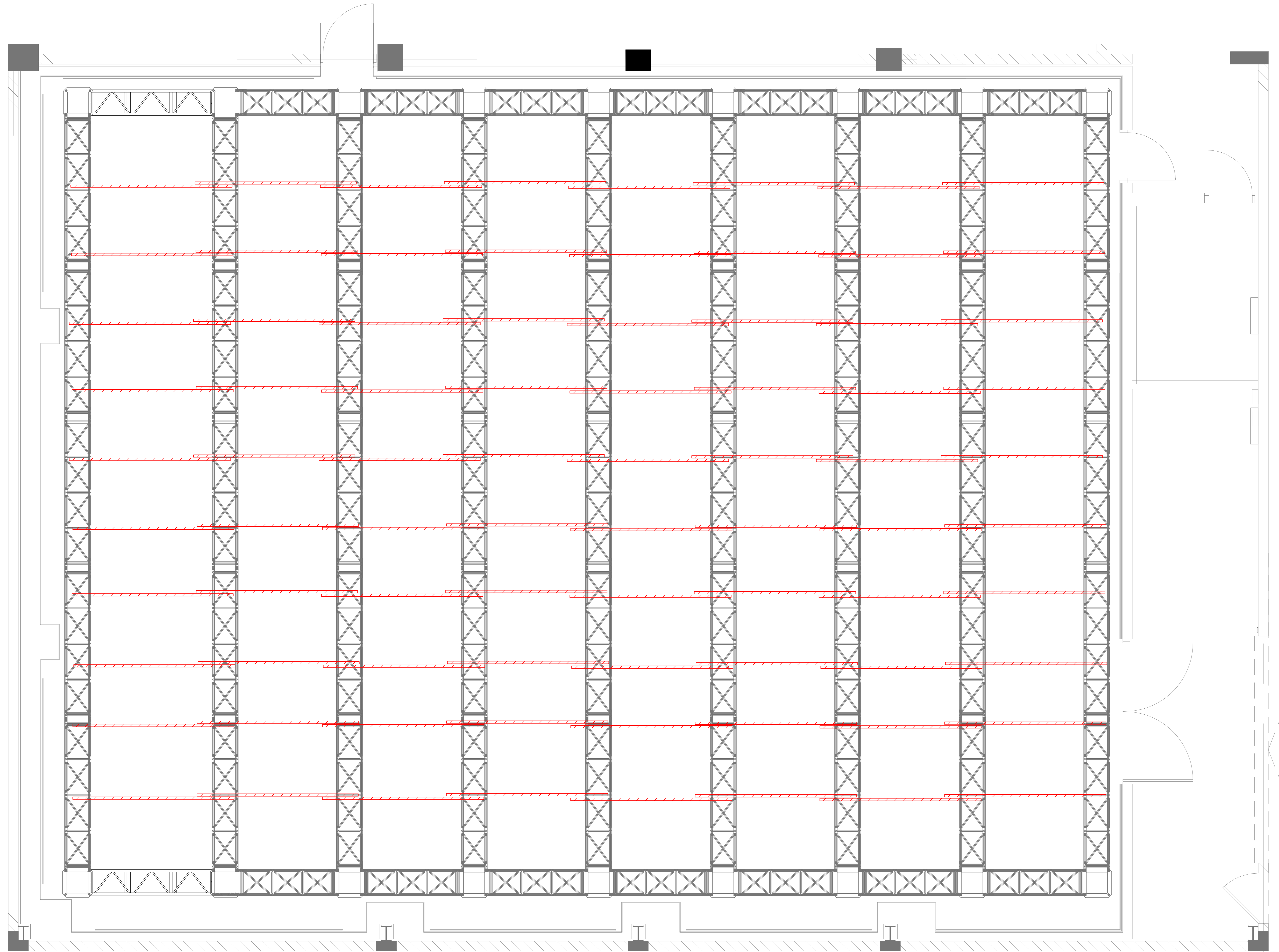
2.05

0.52

3.00

3.05

7.36



شبكة أبوظبي للإعلام  
ABU DHABI MEDIA NETWORK

LIVE  
PRODUCTIONS

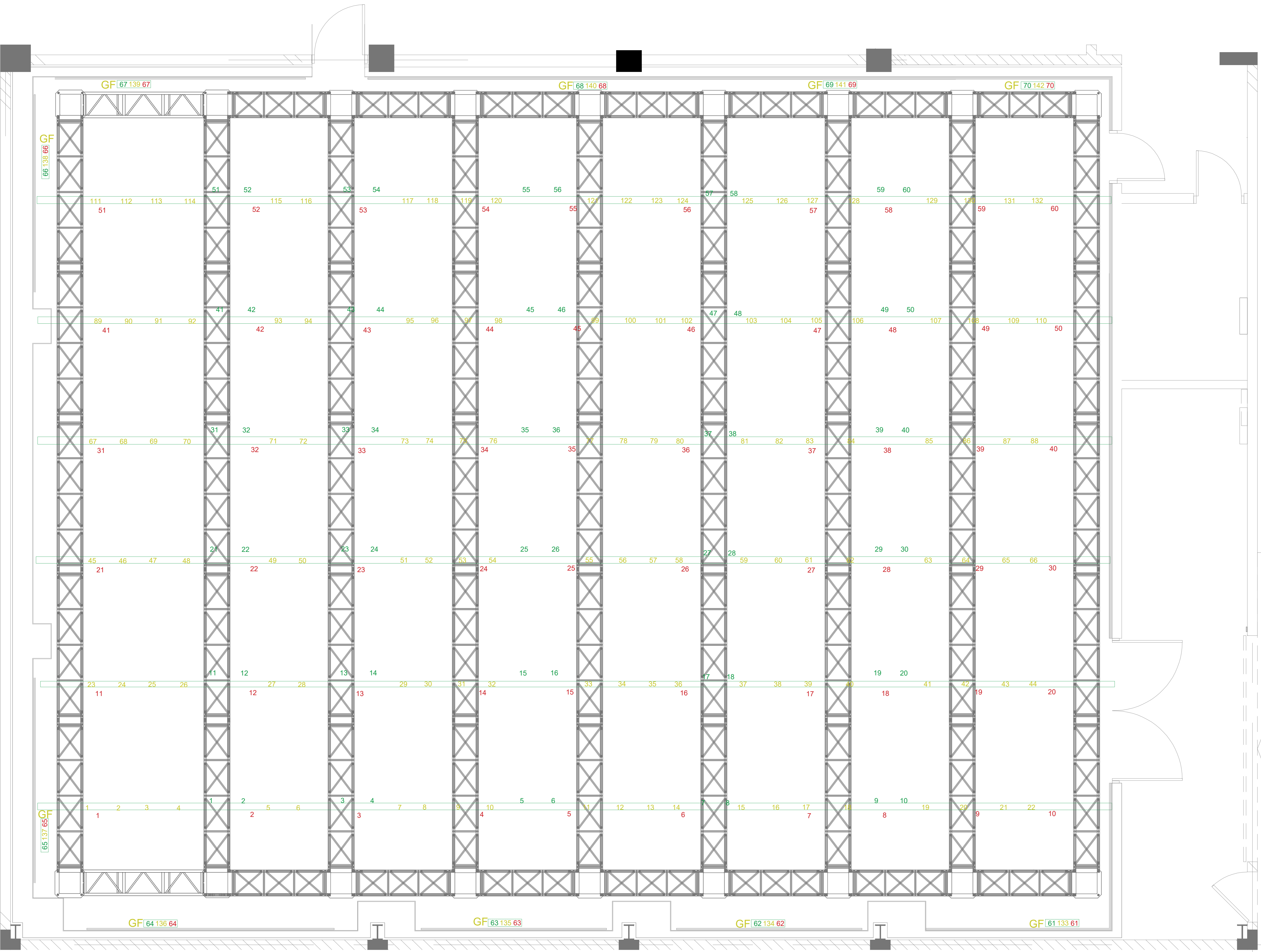
Studio 4

Operation Department.  
Camera and Lighting Section

Trusses and bars Layout

Drawn by: Hesham Alyaseen

Date: 15/11/2023



شبكة أبوظبي للإعلام  
ABU DHABI MEDIA NETWORK



Studio 4

Operation Department.  
Camera and Lighting Section

Power And DMX map

Number of Dimmer channel 142  
Number of Direct Power 70  
Number of DMX port 70

Drawn by: Hesham Alyaseen

Date: 15/11/2023

GF: Ground Floor