

STUDIO 3

Operation Department.
Camera and Lighting Section

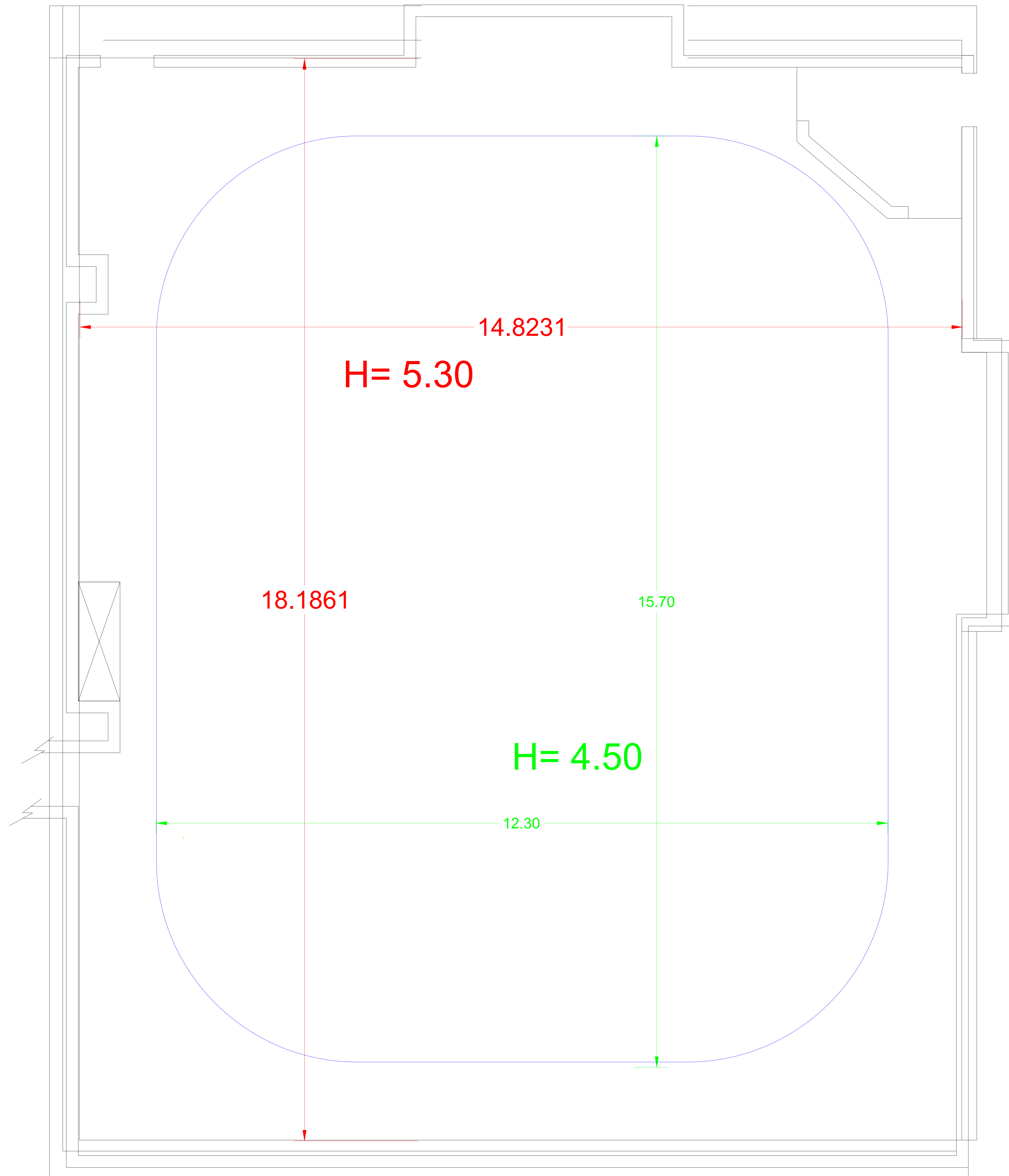
Studio Dimensions

Structural Dimensions: (L:28.1m, W:23m,
H:10m)

Effective Dimensions: (L: 25.1m, W: 20m, H
6.5m)

Drawn By: Hesham Alyaseen.

Date: 15/11/2023



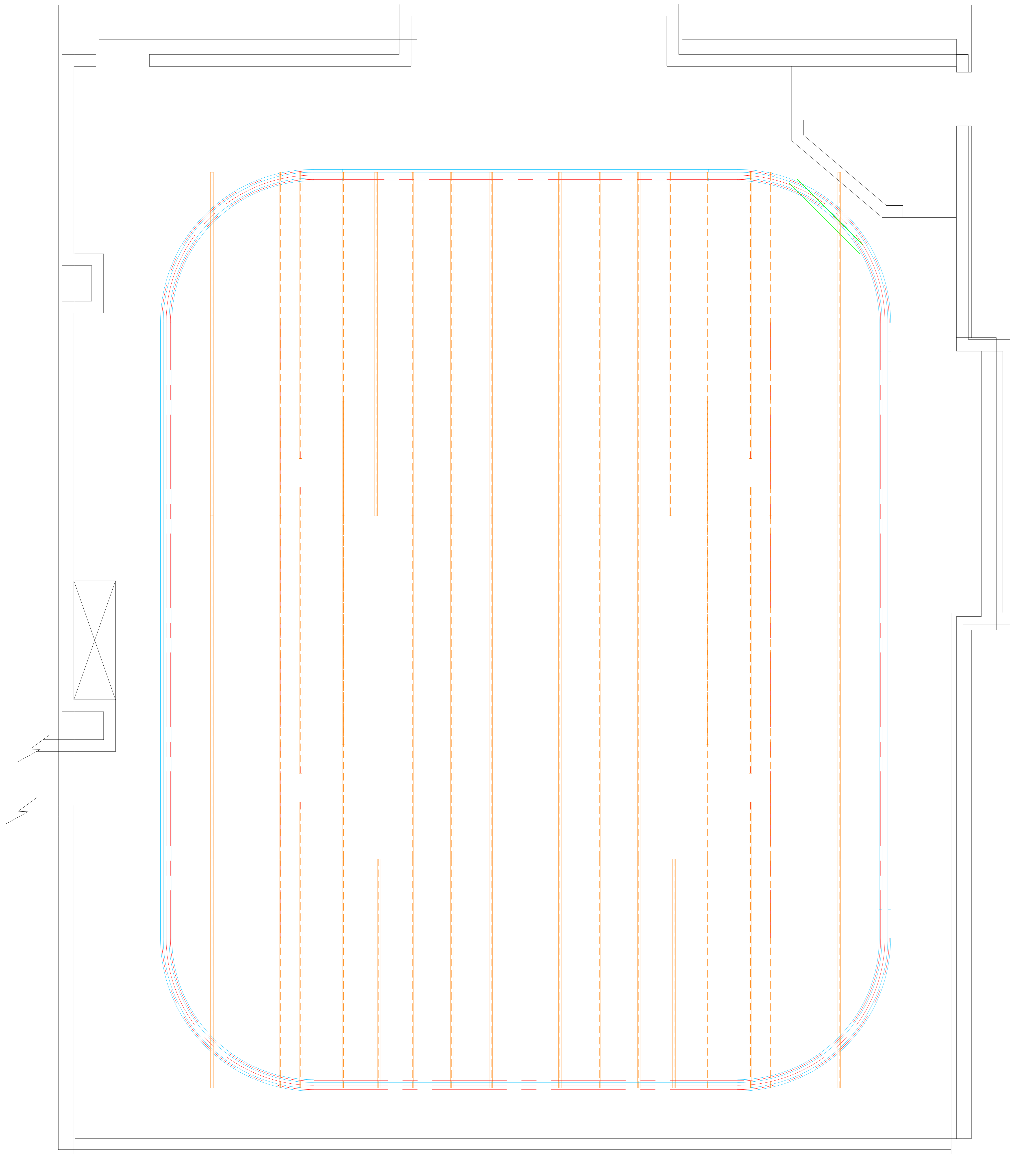
STUDIO 3

Operation Department.
Camera and Lighting Section

Hoist carrier Layout

Drawn By: Hesham Alyaseen.

Date: 15/11/2023



STUDIO 3

Operation Department.
Camera and Lighting Section

Hoists Layout and Numbering

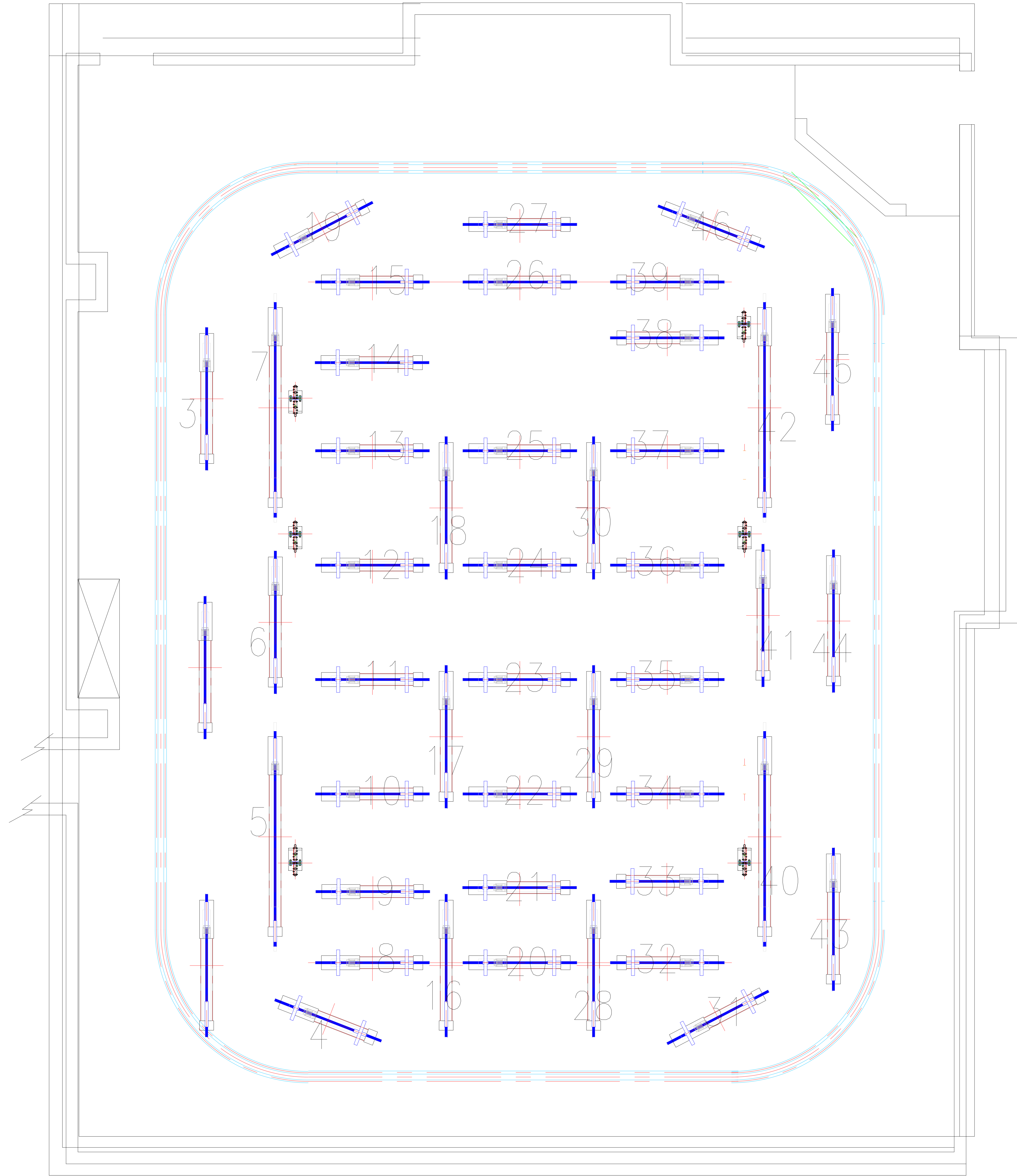
Hoist Brand :De Sisti/ Italy

Number Of Hoists : 46
Hoist Capacity 100 Kg

Number of Scenery Hoists: 6
Scenery Hoist Capacity 200 Kg

Drawn By: Hesham Alyaseen.

Date: 15/11/2023



STUDIO 3

Operation Department.
Camera and Lighting Section
Power and DMX Layout

Number of hoists 46
Number of channels on hoists 138
Number of Direct Plugs on Hoists 34

Number of Panels on the Floor Level (FL) :8
Number of channels on FL :16
Number of Direct plugs at FL: 8

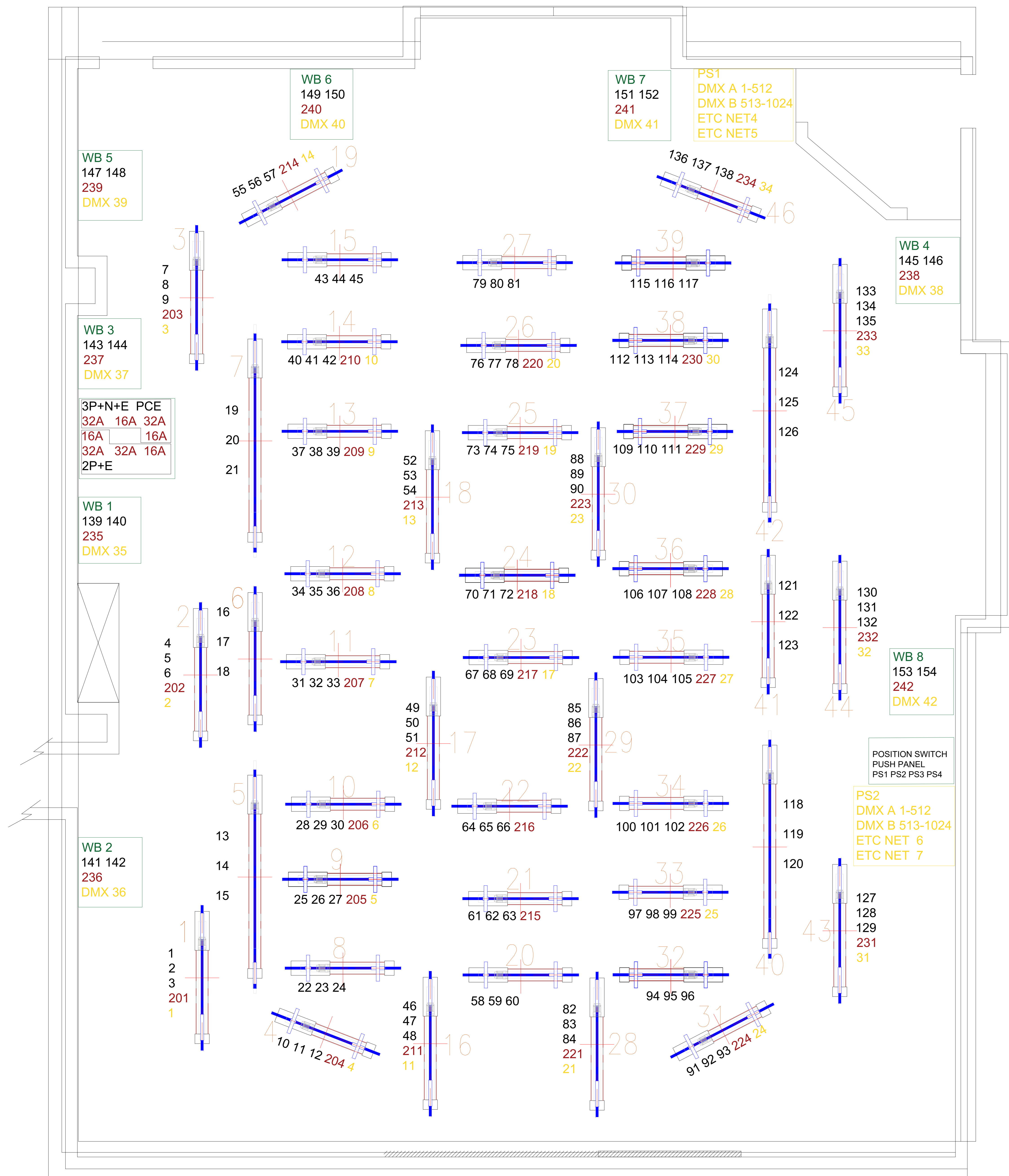
Number of DMX ports on Hoists 34
Number of DMX ports at Floor Panels 8

Drawn By: Hesham Alyaseen.

Date: 15/12/2023

Power panel on the Floor Level

Hoists : 5,6,7,8,15,20,27,32,39, 40,41,42
have No DMX neither Direct Power



POSITION SWITCH
PUSH PANEL
PS1 PS2 PS3 PS4

PS2
DMX A 1-512
DMX B 513-1024
ETC NET 6
ETC NET 7

WB 8
153 154
242
DMX 42

WB 4
145 146
238
DMX 38

WB 7
151 152
241
DMX 41

PS1
DMX A 1-512
DMX B 513-1024
ETC NET4
ETC NET5

WB 6
149 150
240
DMX 40

WB 5
147 148
239
DMX 39

WB 3
143 144
237
DMX 37

3P+N+E PCE
32A 16A 32A
16A 16A
32A 32A 16A
2P+E

WB 1
139 140
235
DMX 35

WB 2
141 142
236
DMX 36